

# The Solar Flare

## Monthly Newsletter for April 2018

### CdS | Capilla del Sol Christian Church (Disciples of Christ)

3130 West Overton Road, Tucson, AZ – NW of Shannon and Overton



Office: Phone: 520-742-4988  
Fax #: 520-447-5069  
email: [office@capilla.org](mailto:office@capilla.org)

#### **Pastor Sherry's Office Hours**

Mon: 9:00 a.m. – 12 noon  
Tue: 9:00 a.m. – 12 noon  
Available other times by appointment.

#### **Admin. Hours**

Thurs: 9:00 a.m. – 12 noon

#### **Contact:**

Minister: Rev. Sherry Willerton

**Phone: 317-331-1314**

Please call the office or Sherry's phone to  
make an appointment

\*\*\*\*\*

***This is a Monthly Newsletter. Please review  
April's calendar attached to this edition.***

Pastor Sherry's Corner:

#### *Easter begets Spring*

Christ is risen! Hallelujah!

May the miracle of *Easter* bring you renewed hope, faith, love and joy. And may you know the joy of His resurrection, the abundance of His life, and the peace of His presence. May the truth and glory of His resurrection bless you always!

When Easter rolls around we start thinking about Spring and looking forward to spending more time outside, planting flowers and gardens, and spending time with friends and family. But this often means that we put aside our meditative time of Lent. How then do we keep our connection with our Lord?

As you start planning for Spring and Summer, remember that the Lord never leaves and is always waiting for you to include Him in your plans – always looking forward to time spent with you and time that you spend giving back.

Let's start our Spring with clean and wholesome hearts, refreshed and ready to continue our time with the Lord in meditation and celebration.

Pastor Sherry

# The Solar Flare

## APRIL Messages



Sunday Services are at 10:00 a.m.

Easter is here! Spring is here!  
In the midst of it all God is always here!

Apr 1 Easter Sunday

Message: "New Life"

Luke 24:1-8 (NIV)

2 Corinthians 5:14-15, 17 (NIV)

Easter Egg Hunt after service

Apr 8 Sunday

Message: "Prayer"

Colossians 4:2-6 (NIV)

Apr 15 Sunday

Message: "Forgiveness"

Luke 23:26-34, 39-43 (NIV)

Apr 22 Sunday Rev. Royce Willerton

Message: "The One You Feed"

Galatians 5:16-25 (NIV)

Apr 29 Sunday

Message: "Our Amazing World"

Psalms 65:1-13 (NIV)

## Prayers and Concerns



## Our Members

Iris Akin  
Karen Allen  
Joyce Anderson  
Jerry Gustafson  
Ron & Peggy Hagen  
Barbara Honea  
Betty Ivy

Margot Kostenbader  
Morgan Muthart  
Ed Rountree  
Barbara Shawley  
Bill Tellam  
Wayne Wallace  
Judi Webster

## Extended Family and Friends

Bob Akins..... Father of Rob Akins  
Harold Ivy..... Son of Betty Ivy  
Katie..... Niece of Mary Ruben  
Kenny Christiansen..... Son of Ed & Marge  
Linda Terry..... Sister of Judi Webster

---

## Hospice Volunteers Needed

(Flyer posted on Volunteer info bulletin board)

### **Soreo Hospice & Palliative Care**

2475 E. Water Street

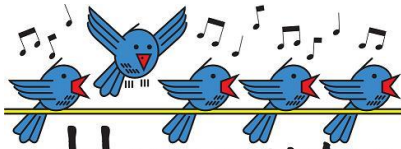
Cell Phone – 520-262-7173

# The Solar Flare

## Upcoming Events

### Sundays

Adult Choir



Add Your Voice

Sunday's at 8:30 a.m. Come Join Us

---

### Mondays

Chewin'  
on the  
Word



Monday's at noon. Come Join Us!

Bring your lunch and join us as we dive deeper into the scriptures we heard on Sunday.

---

### Tuesdays

Color & Crafts



Each Tuesday afternoon a group of women meet at Nina Larson's house at 1:00p.m. for fellowship and to color and/or work on crafts.

Please bring your coloring books/pencils /etc. and any crafts you want to work on.

**Saturday, April 14<sup>th</sup>, 11am**

**Sol Sister's Meeting will be held  
at Joan Carlson's Home**

\*\*\*\*\*

**Progressive Fellowship!**

**Saturday, April 14, 5pm**

You won't want to miss this year's Progressive Fellowship with appetizers at Judy Weisenborn's home starting at 5 p.m. and then moving on for desserts at Tom & Kathy Howard's home.

***Sign up this Sunday, April 1 to bring  
either an appetizer or dessert.***

\*\*\*\*\*



**Volunteer Orientation  
2820 W. Ina Road  
9:30a.m. – noon**

Tuesday, Apr 3

Interfaith Community Services  
2820 W Ina Road, Tucson

# The Solar Flare



## ICS FOOD ITEM for April

**Canned meats-tuna, Spam,  
chicken, etc.**

Please drop off your food item in the blue wagon in the entryway.

## WAY TO GO, CAPILLA!!!

*Numbers from the ICS Food Bank show that during January 2018, Capilla del Sol provided **41.0 pounds of food** to help feed hungry neighbors. Because the need for food always exists in our community, please continue to donate as you can.*

**Thanks for the outstanding support of our neighbors in need**

**There are many other opportunities for helping the church when you are shopping**

**(i.e. Amazon and AmazonSmile).  
You can register both credit and debit cards.**



## BUTTERFIELD ELEMENTARY

MARANA UNIFIED SCHOOL DISTRICT  
3400 W. Massingale Road, Tucson

Butterfield is in need of volunteers to work with small groups of students in the classroom, with the classroom teachers.

Subjects would include reading and math.

If interested, please call:

**Joshua Bayne, Principal**  
**520-579-5000**

\*\*\*\*\*

## Community Cards

Register your rewards cards at Fry's. You will still receive your rewards points and the church will receive a percentage of your spending.

If you have any questions, please email [FrysCommunityRewards@frysfood.com](mailto:FrysCommunityRewards@frysfood.com) or visit our website at [www.fryscommunityrewards.com](http://www.fryscommunityrewards.com).

Thank you

Also, many thanks to the families that have registered their credit or debit cards when shopping at many stores including Amazon.

There are many other opportunities for you to benefit our church from your purchases.

*If you have not signed up for this free money for your church, please ask Wayne Anderson for details.*

# The Solar Flare

---

## Summer Camp: June 3 - 8

Register Now! Online Registration Available.



Sunday, June 3 - Friday, June 8  
at Camp Pinerock - Prescott, AZ

Early Bird Registrations  
(due April 21): \$360

Regular Registrations  
(due May 19): \$385

Don't delay, [register online today!](#)

Visit [www.azdisciples.org](http://www.azdisciples.org) for more information.

\*\*\*\*\*

## Mission Trip?

Anyone interested in a mission trip this summer? Options might be:

### Standing Rock Reservation

June 10-16 - Learn about indigenous justice

### Yakama Reservation

Foodbank Garden - Annual Duck Count  
Wild Horse Count - Gathering of Sage

### Flood Relief

Houston - California - other?

**Join with another church on their mission trip**

If you are interested in participating in a mission trip, please let Pastor Sherry know.

## Congregational Resources

Recent Updates

[Financial Highlights Thru March 11, 2018](#)

[Ministry Table Meeting 3-20, 2018](#)

[Worship Team Minutes - March 2018](#)

---

## Elder for the month of April

Mary Jane Hickey  
(520) 744-6070

---

## CDS Staff

Minister..... Rev. Sherry Willerton

Director of Music ..... Jess Edelbrock

Office Administrator..... Jane Hart

Custodians ..... Joyce & Wayne Anderson

# The Solar Flare

## April 2018

Sun Apr 1	Mon 2	Tue 3	Wed 4	Thu 5	Fri 6	Sat 7
10:00a.m. Worship Birthday Cake: Betty Ivy Counters: Jan Prinz, Mike Cecchi CWW: Kathy Howard Host: Barry & Patti Robinson 2 more	CLOSED Office Hours No 'Chewin on the Word'	6:00p Elders Meeting 9a-Noon Office Hours		9a-Noon Office Open		
8	9	10	11	12	13	14
10:00a.m. Worship Counters: B.Robinson, T. Howard CWW: Tom Howard Elders: Mary Lou Hackett, Tom Howard Host: Bill & Yvonne Nichols Lector: Margee Smith	9a-Noon Office Hours Noon - Chewin on the Word	9a-Noon Office Hours	ANNIV: Jo & Larry Hunt BD: Pat Williams	9a-Noon Office Open		11a Sol Sisters-Joan Carlson's 5p Progressive Fellowship BD: Grayson Slack BD: Mike Cecchi
15	16	17	18	19	20	21
10:00a.m. Worship Counters: Kathy Howard, Bill Nichols CWW: Carla Birchfield Elders: Kathy Howard, Barry Robinson Host: Terry & Connie Gilliland Lector: Carol Smith	9a-Noon Office Hours ANNIV: Dan & Agnes Caro Noon - Chewin on the Word	9:30a.m. Worship Team 9a-Noon Office Hours 6:30pm Ministry Table		9a-Noon Office Open		
22	23	24	25	26	27	28
10:00a.m. Worship Counters: C. Smith, J. Anderson CWW: Carla Birchfield Elders: Gail Nicewander, Judy Weisenbor Host: Wayne & Joyce Anderson Lector: Tom Howard	9a-Noon Office Hours ANNIV: Jan & Lou Prinz ANNIV: Kathy & Tom Howard Noon - Chewin on the Word	9a-Noon Office Hours BD: Jesse McCann	BD: Wayne LaBrie	9a-Noon Office Open	BD: Kaitlin Christiansen	
29	30	May 1	2	3	4	5
10:00a.m. Worship BD: Bob Birchfield Boy Scouts Breakfast Counters: MJ Hickey, W. Anderson CWW: Jana Akins	9a-Noon Office Hours Noon - Chewin on the Word	6:00p Elders Meeting 9a-Noon Office Hours		9a-Noon Office Open		

